

BOARDING AT WESLEY



WESLEY COLLEGE

MELBOURNE AUSTRALIA - SINCE 1866

LIVE AND LEARN TOGETHER



Wesley's program provides a safe environment in metropolitan Melbourne where learning and living are inextricably linked.

Our innovative, student-centred program is open to students in Years 7 to 12. Students join us from across Australia and around the world. From the courses on offer to the architecture and location of our boarding facility, everything has been designed to enhance student learning.

The boarding program at Wesley builds on more than a century of success in residential learning with a contemporary, holistic program designed for the students of today.

Wesley's holistic approach to learning is our passionate commitment to the development of the whole child in an inclusive, coeducational environment.

Our boarders live and learn together, accessing the unmatched teaching and learning experiences of an IB World School and a residential curriculum designed for Years 7 to 12 boarders.

Located at our Glen Waverley Campus, our state-of-the-art boarding facility provides a safe, supportive and enriching home away from home. Our dedicated wellbeing team, including live-in mentors and an extensive network of day school staff, provide comprehensive support and care for all boarders.

The multipurpose boarding facility brings together students from culturally and linguistically diverse backgrounds, affording them the unique opportunity of living, learning and growing together.

A GREAT WESLEY TRADITION

'Having re-launched in 2016, boarding is not new to the College and, in many ways, can rightly be seen as an enduring element of our DNA. It builds on more than a century of boarding and several decades of outdoor education, as well as our highly-acclaimed residential learning programs – Clunes (2000) in country Victoria and the Yiramalay Studio School (2010) on Leopold Downs in the Kimberley Region of Western Australia.'



Nick Evans
Principal





INTEGRATED, STUDENT-CENTRED PHILOSOPHY

Wesley recognises that students are intellectual, emotional, physical, social, cultural and spiritual beings. The boarding experience is deliberately designed to enhance development across each of these dimensions.

INTELLECTUAL

Students choose from a range of internationally recognised academic programs. After the school day, life skills workshops and academic tutoring support students’ academic and personal development.

EMOTIONAL

Students are well supported by staff including live-in residential mentors, on-campus counsellors, psychologists, nurses and health consultants, and a network of pastoral care support staff.

SOCIAL

Boarding students form lifelong friendships with day students and other boarders. They support and lead younger boarders, and participate fully in campus life and cocurricular activities.

SPIRITUAL

Students can seek spiritual support through pastoral care and by working with the campus Chaplain or mentor.

CULTURAL

Students learn to relate across cultures; an important skill in an increasingly globalised world.

PHYSICAL

Students can access all campus recreational facilities and seek medical assistance from the health centre.

LEARNING AND WELLBEING

At Wesley, we encourage behaviours that positively influence the learning and wellbeing of self and others to promote a safe, inclusive, and cohesive learning community.

Wesley’s approach to learning and wellbeing is captured in the acronym: ROAR (Respect, Opportunity, Achievement and Resilience). ROAR isn’t merely an approach; it’s a way of life that equips our community to embrace lifelong learning and wellbeing.

As an IB World School, we uphold the principles of individual and collective responsibility as we nurture respectful, resilient and achievement-focused learners. We recognise that learning and wellbeing work in unison to support confident, capable students.

‘Wesley boarding students experience considerable growth and development, and our goal is to ensure our students are fully supported across all domains. Through our boarding and wellbeing programs, the academic curriculum, and cocurricular experiences, Wesley prepares students for success in their final years of school and life after graduation.’



Tom Giles
Head of Boarding





OUTSTANDING CONTEMPORARY DESIGN

Our Learning in Residence facility is architecturally designed as a series of individual residences integrated within the Glen Waverley Campus.

On-campus living provides a safe and secure environment. Boarders have convenient access to state-of-the-art study and recreational facilities, and exceptional pastoral care with high staff to student ratios.

RESIDENTIAL STRUCTURE

RESIDENCES

Boarding consists of eight separate residences for girls and boys, each housing up to 16 students of similar age. Students are resident for seven days and nights a week during term time.

TWIN-SHARE AND SINGLE ROOMS

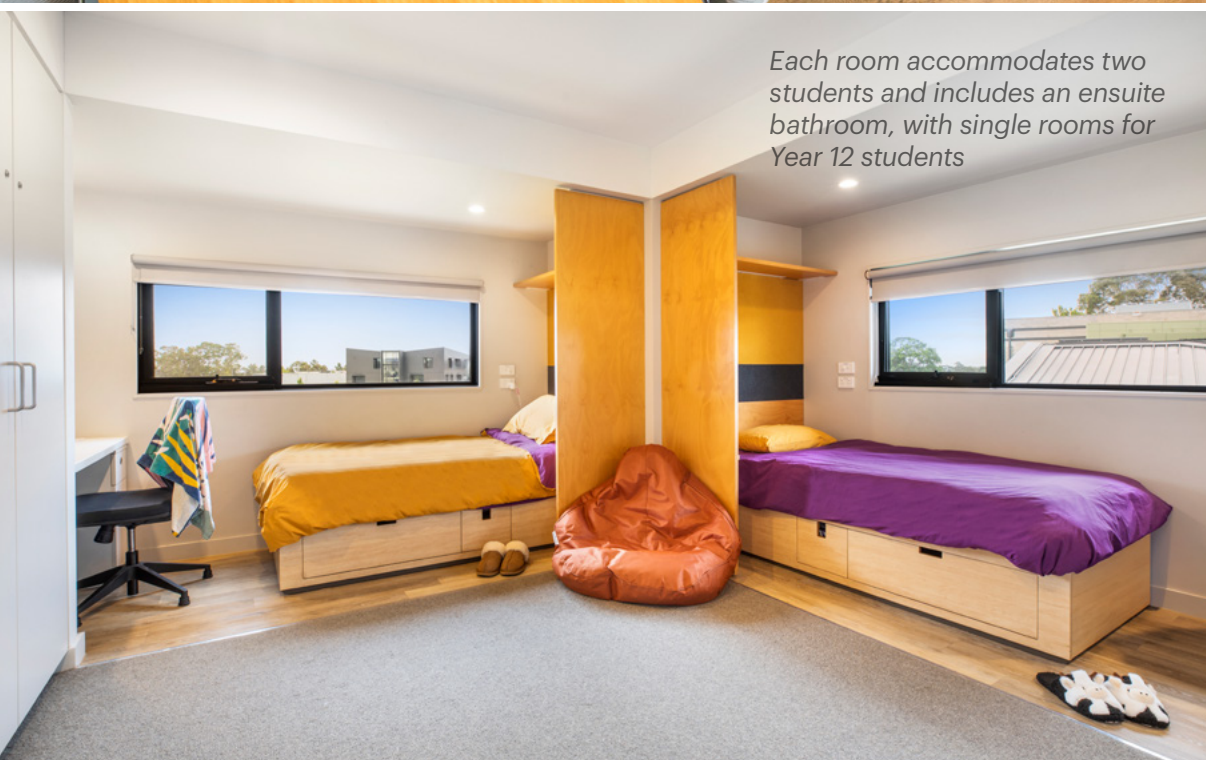
Rooms for Years 7 to 11 are twin-share. Single rooms are available for Year 12 students, with generous space for private study. All rooms include an ensuite bathroom.

STUDY FACILITIES

Each student has study facilities in their room. They can also access the library for study periods, supervised by residential and campus staff.

COMMUNAL DINING

Students have access to a communal dining space for breakfast, lunch and dinner. It seats 240 and adjoins the recreational area. Fresh, tasty and nutritious meals are always on the menu.



Each room accommodates two students and includes an ensuite bathroom, with single rooms for Year 12 students





MAKING THE MOST OF EVERY DAY

Our boarders are active in all areas of school life, and make full use of the breadth and quality of the extensive cocurricular programs including sport, music and performing arts, as well as student clubs, committees and leadership opportunities.

A DIVERSE CURRICULUM

Wesley is renowned for its strong academic outcomes and holistic experiences. Boarders choose from a range of educational pathways and are supported by a schedule of evening and weekend programs.

All students complete the International Baccalaureate Middle Years Program in Years 7 to 10, and choose from one of two academic pathways in their final years:

- International Baccalaureate Diploma Program (IB DP)
- Victorian Certificate of Education (VCE)

STUDY SUPERVISION AND SUPPORT

An evening program of structured academic extension helps students consolidate what they have learnt that day. Small group tutorials and individual learning assistance provided by expert mentors and experienced College teaching staff also support students in completing homework and assignments.

Regular communication with and between the students, their teachers and the boarding staff means that academic, social and emotional wellbeing is supported inside and outside the classroom.



STAFF IN RESIDENCE

Wesley provides an exceptional level of care for each and every student. Residences have dedicated live-in staff mentors who provide 24/7 supervision and stay overnight in the residences.

With a diverse team of professional staff mentors, every student is able to receive individual, age-appropriate care and support to thrive in their new environment. In addition, the Head and Deputy Heads of Boarding live on campus adjacent to the student residences and are on-call 24/7.

SAFETY AND SECURITY

Your child's safety is our highest priority. Each student is issued with a personalised electronic swipe card, allowing access to their own residence, as well as common areas.

Onsite security personnel are supported by video surveillance of the grounds. Campus buildings and gates are locked each evening, and all residences are alarmed.

With prior parental approval, students can browse the local shopping precincts, or take day leave or stay overnight to visit family or friends. Parents are required to provide a list of approved people boarders can visit via the *Approved Host Leave* form.

A WELCOMING COMMUNITY

When new boarders first arrive at our Learning in Residence facility, extra attention is paid to ensuring they feel welcomed in what may be a new city or country.

With a variety of social programs, boarders settle in and make new friends both within their residences and among the broader community.

Students are encouraged to keep in regular contact with their friends and family outside the College via video calls and email.

COCURRICULAR SPORT

Every Saturday morning the whole College gets involved in sport, with more than 680 teams competing in 21 different sports across the year.

Every interest and talent is catered to, with boarders accessing the extensive sporting facilities on-campus. These include five ovals, an indoor pool, gymnasium, basketball court, athletics track, hockey pitches, tennis courts, netball courts and playing fields for cricket, football and soccer.



Boarders have access to a communal dining space, with adjacent games room and study space



A TYPICAL DAY



06:30–08:00 EARLY MORNING ACTIVITIES

Morning sport training, music practice and theatre rehearsals take place around the campus. The Weights and Conditioning room is open, for anyone who enjoys a morning work out.



07:00–08:15 BREAKFAST

A variety of healthy options are offered, including congee and other international foods to make students feel at home.



08:30 SCHOOL DAY BEGINS

After breakfast, it's a short walk to the classrooms and study areas. Students will often meet friends in the quad before heading off to classes together.

13:00–13:40 LUNCH

Lunch is served in the dining room, where day and boarding students mix. Students in Years 7 to 9 collect their lunch and return to the Middle School area.

15:35–18:00 AFTERNOON ACTIVITIES

After classes end, students can either head off to sport training or other cocurricular activities, or back to Learning in Residence to do homework.

18:00–18:30 DINNER

Dinner is served! Multiple food options and an eclectic menu cater to our diverse community.



RESIDENTIAL CURRICULUM | AFTER SCHOOL AND ON WEEKENDS

Wesley's holistic approach extends to the Residential Curriculum, a comprehensive program to engage boarders in social, charitable and educational opportunities. There are numerous opportunities to socialise including weekend outings, boarding community events and year level-specific dinner events. Students are active in the local community, participating in community service initiatives such as tree planting and visiting local charities. The curriculum also focuses on future skills development: boarders can learn new skills through barista and first aid courses, learn to drive programs and CV writing workshops. Boarders participate in networking nights and a Careers Expo, providing early career and study insights, helping to prepare them for the future.

EVENINGS

YEARS 7–9

18:30–19:30 TUTORIAL

To ensure our younger boarders stay on track, students spend an hour with mentors to complete homework and assignments.

19:30–21:00 RELAXATION / FITNESS TIME



21:15 RESIDENCE EVENING ROUTINE

Years 7 to 9 hand in technology devices



21:30 LIGHTS OUT



YEARS 10–12

18:30–21:30 FLEXI-TIME

Students structure their evenings to suit their workload, with a mixture of

- Independent study and assignments
- Small group tutorials
- Individual study assistance with their Residence Mentor
- Relaxation or fitness

21:45 RESIDENCE EVENING ROUTINE

Year 10 and 11 hand in technology devices



22:00 LIGHTS OUT



WEEKENDS



SATURDAY MORNING SPORT

APS competition sport takes place every Saturday morning across three seasons.

SUNDAY EVENINGS

On Sunday evenings, boarders in Years 7 to 9 have a dedicated hour with staff to prepare for the week ahead.

RESIDENTIAL CURRICULUM

At the end of a busy school week, boarders can unwind and connect over community events. These include games and activities in the Hartnell Dining Room, barbecues, ice cream night, and the Social with other Victorian boarders.

EXCURSIONS & OUTINGS

Living in Melbourne means supervised access to the beach, festivals and events in the city. Outings might also include professional musicals, footy matches, ice skating and movies.



MEET OUR BOARDERS

We have a wonderfully diverse boarding community of local, rural and international students. Our community reflects the diversity upon which Wesley is built and provides an opportunity for boarders to learn how to relate across cultures, instilling a unique world-view that will serve them throughout life.



AMBER, YEAR 12, DARWIN

Amber moved to Melbourne after hearing glowing reviews from friends who had attended Wesley. A talented tennis player, Amber is the number one player for Wesley's Girls' First Tennis team and also competes outside of school with Kooyong Lawn Tennis Club. One of her proudest moments was winning the APS Tennis Premiership in 2024. Amber has also excelled academically, earning a place on the Principal's Honour Roll for her Year 11 results.

'You're always having fun with people,' she says. 'You learn how to live with others, look after yourself and be more independent, which will really help when you finish school.'



ROMAN SMITH, CLASS OF 2024, IB DP, ATAR 99.15, SOUTH KOREA

Coming from Seoul to board at Wesley was a great experience for me. I was able to forge a second family consisting of meaningful friendships that will last long beyond our years at Wesley. The unwavering support from staff was second to none and I would like to thank them for that. I have accepted a place at the University of Sydney to study Mathematics.



CANDICE, YEAR 11, SINGAPORE

Year 11 boarder Candice joined Wesley College in Year 9, travelling from her home in Singapore in search of a more holistic education.

Candice's favourite subject is psychology. 'At Wesley, you're encouraged to follow your interests,' she says. 'I wouldn't have had the same opportunity back home.' Her goal is to become a psychologist, and she is grateful that Wesley provides the support to help her pursue this passion.

'Over time, I've grown stronger and more independent,' she says of her experiences as a boarder. 'I've learnt to take responsibility for myself and be comfortable living without my family nearby. At Learning in Residence, you live with your friends, so you never feel lonely.'



DOMINIC WANG, CLASS OF 2024, VCE DUX, ATAR 99.80, CHINA

The staff at Learning in Residence provided an amazing living environment that was free from distractions, allowing me to focus on whatever I needed to do. Whenever I needed assistance, they were always happy to support me. I am excited to be studying Engineering at New College, University of Oxford.



IMAAD, YEAR 11, PAKISTAN

Imaad lived in Australia from 3 to 13 years old, before returning to Pakistan. He convinced his parents to let him finish high school in Australia, and boards at Wesley College.

To support his goal of attending university in Australia, Imaad has found both the academic environment and boarding life at Wesley to be transformative. 'Boarding has definitely made me more organised. Back in Pakistan, I didn't think too much about what I was doing. Now I've taken things into my own hands – schoolwork, extracurriculars, everything.'



LARA, YEAR 12, GATUM VICTORIA

In Year 10 Lara travelled to the Yiramalay Studio School in remote WA as part of Wesley's experiential learning program. The experience was life-changing, and she developed a passion for learning about Aboriginal and Torres Strait Islander people and cultures. She has since organised fundraisers for disadvantaged Aboriginal communities, led Reconciliation Week activities and volunteered with her fellow boarders. She has been driven by the enthusiasm of her teachers and peers, in a culture where community service is encouraged. 'I've learnt the importance of listening and leading with respect, and developed confidence in advocating for meaningful change that reflects real purpose.'

This year she will graduate with her International Baccalaureate Diploma and was recently recognised with a Visual Arts prize. 'Wesley has been amazing at supporting me academically,' Lara says, citing the 'study hour' tutorials and routine she developed in her Middle School boarding years as a crucial foundation.



JACK, YEAR 12, WAGGA WAGGA NSW

This year, Jack was named the Learning in Residence Captain and a School Prefect. He's embraced the role, and has particularly enjoyed running community service initiatives and strengthening the boarding community. 'One of the best things about boarding is the friendships that I have made.'

He is studying the International Baccalaureate Diploma Program (IB DP), a globally recognised school qualification offered at Wesley alongside the VCE. 'Living on campus allows us to get the full benefits of College life, with access to teachers who are always willing to give up their time to see us and help us achieve our academic goals.'



ANJA, YEAR 10, MOAMA NSW

For Anja, the decision to attend Wesley was driven by the school's strong academic and sporting opportunities, particularly in swimming. 'Wesley allows me to pursue competitive swimming,' she explains, adding that the facilities boarding students have access to are 'amazing'.

'It's been a big change, but it's been a very good decision to start boarding,' Anja shares. 'Everyone here is really supportive, and I've settled in well.'

Boarding has also provided Anja with a unique experience. 'I learn how to live with people – how to interact with them in both a school and home environment,' she reflects. She enjoys the sense of community and support, noting, 'Living with people and getting to know so many people from different places... it's such a good opportunity because it's so different from being at home.'





WESLEY COLLEGE, GLEN WAVERLEY CAMPUS

- 1. SPORTS CENTRE AND COURTS
- 2. CAMPUS LIBRARY AND MIDDLE SCHOOL
- 3. MUSIC SCHOOL
- 4. SENIOR SCHOOL
- 5. LEARNING IN RESIDENCE (BOARDING)



HOW TO APPLY

To enrol your child at Wesley College and secure a place in the boarding program, please complete the application for enrolment form online at:

www.wesleycollege.edu.au/apply

Wesley welcomes students from rural and regional Australia and from all over the world.

Places are limited and will be allocated by date of application. If you would like to discuss your child's application, please contact:

Glen Waverley Admissions

Call: 03 8102 6508

Email: gw.admissions@wesleycollege.edu.au

Visit: www.wesleycollege.edu.au/boarding

Head of Boarding, Tom Giles, meets with student leaders regularly



BOARDING AT WESLEY

WESLEY COLLEGE MELBOURNE

ABN 55 611 238 540 CRICOS Provider No 00354G

 Printed on 100% recycled paper



WESLEY COLLEGE

MELBOURNE AUSTRALIA - SINCE 1866